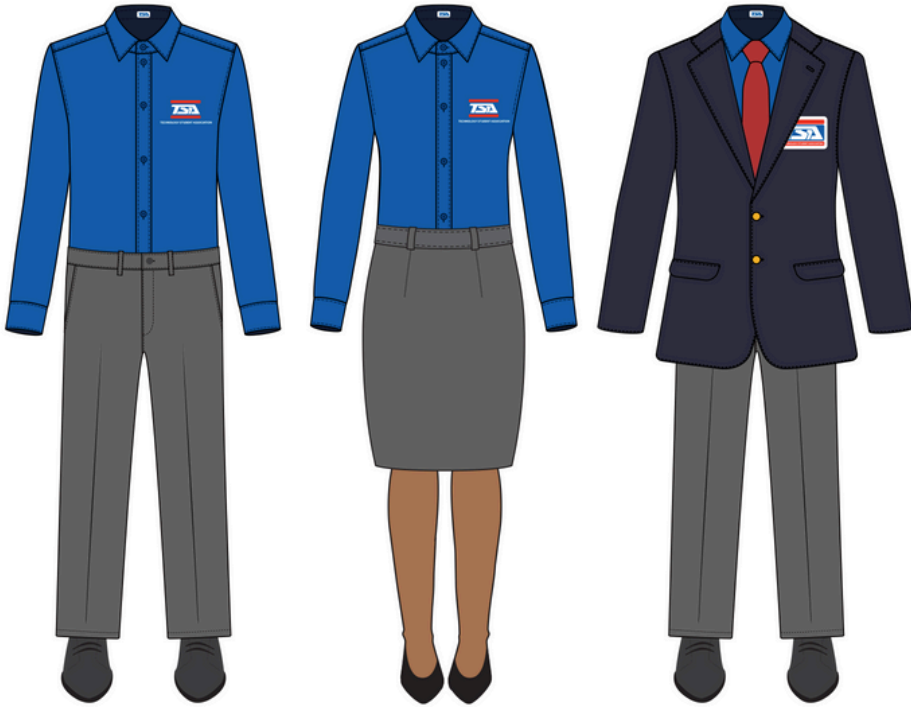




STATE CONFERENCE COMPETITION ATTIRE



COMPETITION ATTIRE - NQE

Shirt: official royal blue-button down TSA shirt. *For the Texas TSA State Conference ONLY, students may wear the Texas TSA logo-button down shirt, short or long sleeve. This shirt is NOT acceptable for competition at the National TSA Conference.*

Pants, or knee-length Skirt: gray

- **Unacceptable:** jeans; jeggings; leggings; baggy pants; exterior pocket pants; shorts
- **Unacceptable:** any skirt length shorter than one inch above knee.

Shoes: black dress shoes worn with black or dark blue socks, hosiery (optional):

- open-toed shoes or sandals are acceptable
- **Unacceptable:** athletic shoes; flip-flops; military boots; or work boots

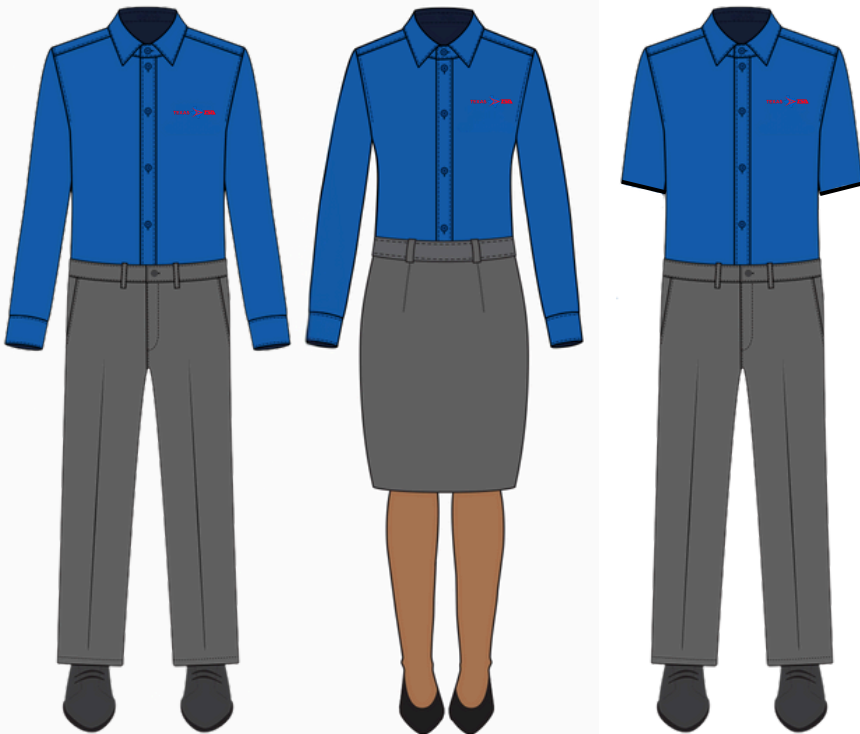
Required additional attire for Middle and High School Chapter Team event

Blazer: navy blue with official TSA patch

Tie: official TSA tie (males)

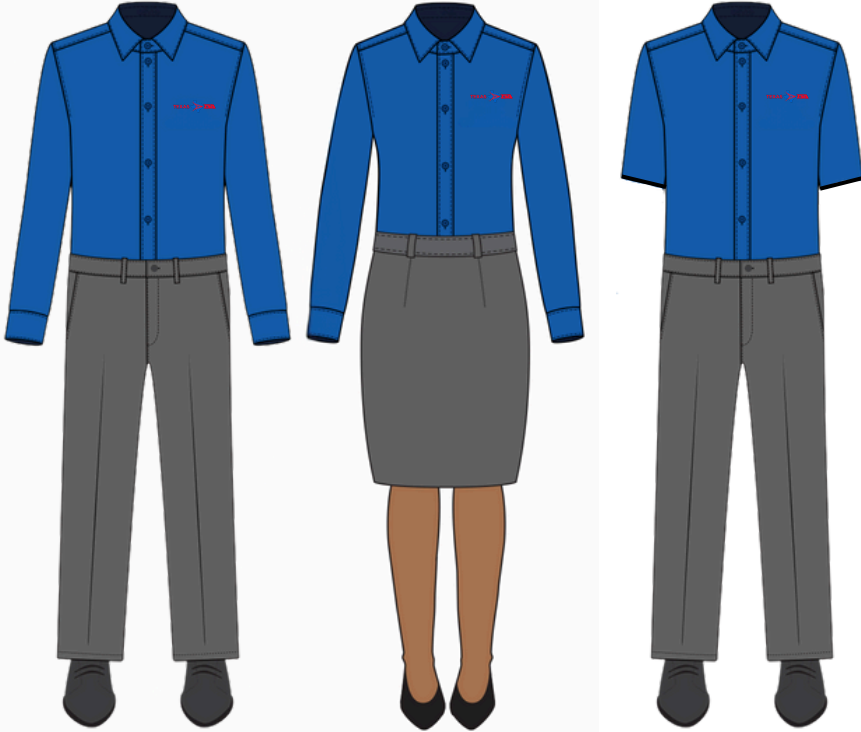
- Females are not penalized for wearing the official TSA tie to Chapter Team or any other competitive event.

***Above attire may be worn for other competitions if preferred by event participants.**





STATE CONFERENCE COMPETITION ATTIRE



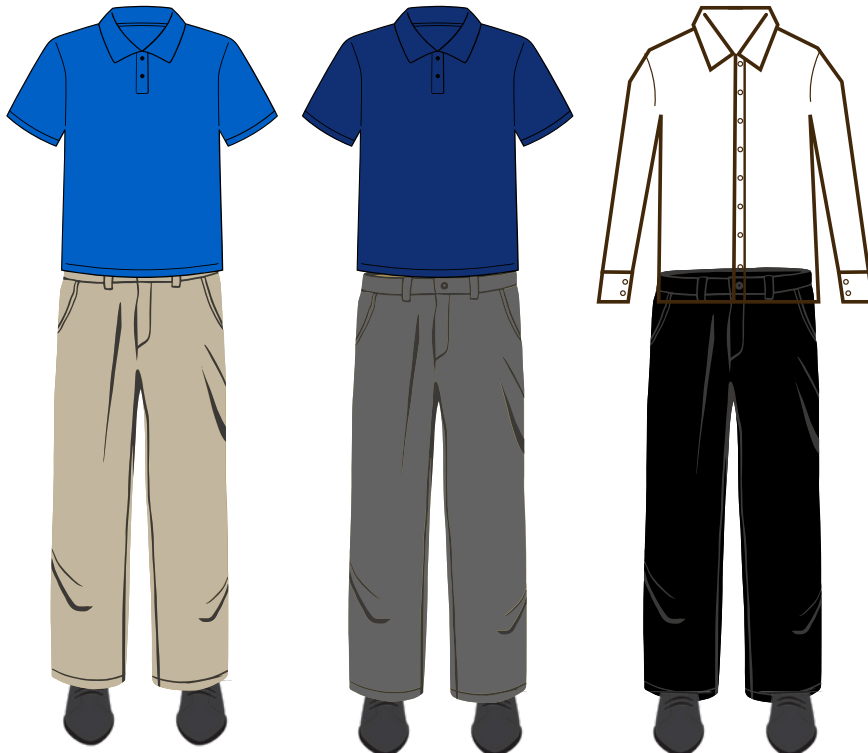
COMPETITION ATTIRE - UTE (ON-SITES, PROJECT AREA & VEX ROBOTICS)

Shirt: official royal blue-button down TSA shirt, official royal blue polo or solid polo with NO logo in white, red, navy or royal.

- **Unacceptable:** school logos or any other logo except the National TSA logo or the Texas TSA logo.

Pants, or knee-length Skirt: gray, black, navy or khaki

- **Unacceptable:** jeans; jeggings; leggings; baggy pants; exterior pocket pants; shorts
- **Unacceptable:** any skirt length shorter than one inch above knee.



Shoes: black dress shoes worn with black or dark blue socks, hosiery (optional):

- open-toed shoes or sandals are acceptable
- **Unacceptable:** athletic shoes; flip-flops; military boots; or work boots



STATE CONFERENCE GENERAL SESSION ATTIRE

EXAMPLES



GENERAL SESSION ATTIRE

COMPETITION ATTIRE IS PREFERRED *see guidelines on Competition Attire (NQE & UTE)

Unacceptable Attire for General Sessions:

- Shorts
- Tank Tops; Spaghetti Straps/Strapless Tops; No Bare Mid-riffs/Cropped Shirts
- Jeans; Cargo Pants; Jeggings/Leggings; Pants with Exterior Pockets; Baggy Pants
- T-shirts

ALL students accepting an award on stage must be in Competition Attire (NQE & UTE). Attire will be checked prior to going on stage. Texas TSA reserves the right to not allow students out of dress code from going on stage.



STATE CONFERENCE

Official Attire Providers

Texas TSA On-Line Store



National TSA On-Line Store

